



beam

The trade association for energy
infrastructure & systems

ELECTRICITY NETWORKS INFRASTRUCTURE

PROSPECTUS

Welcome from the CEO



BEAMA represents an industry at the heart of the UK's clean energy and electrification journey. Our members enable clean power in the UK and around the world. They design, manufacture and supply the technologies which decarbonise and electrify buildings and transport, whilst expanding and upgrading energy infrastructure. These technologies are fundamental to economic growth, energy security and the delivery of a low carbon future.

As a trade association, our role is clear: to support our members to succeed in a fast-changing and increasingly complex landscape. We bring industry together to provide a strong, credible collective voice, which we use to influence standards and turn policy ambition into practical action. We underpin this by facilitating the sharing of insight and best practice, helping to translate common challenges into shared opportunities. Through collaboration and technical expertise, we support UK manufacturing to remain competitive, resilient and relevant across both UK and EU markets.

This prospectus sets out how BEAMA supports its members today, while laying the foundations for long-term success. I am proud of the organisations we represent and the influential role we play in building a strong, innovative and forward-looking industry. We welcome new businesses into our growing community of members at this exciting time for our sector, and I am proud to see BEAMA at the forefront of shaping the future market for our membership."

Yselkla Farmer
CEO



About BEAMA



Shaping the policy, standards and markets that enable UK electrotechnical manufacturers to compete, comply and grow.

BEAMA is the UK manufacturing trade association for the electrotechnical sector, representing companies that design, manufacture and supply the energy infrastructure and systems critical to the UK's Net Zero and energy security ambitions.

We work at the intersection of regulation, standards and market development, providing manufacturers with early insight, technical expertise and a collective voice on product safety, performance, energy efficiency, digitalisation and sustainability. Our scope spans energy networks, electrical infrastructure and service technologies across the built environment, transport and energy sectors.

Established in 1905, BEAMA is a trusted partner to manufacturers navigating complex and fast-moving change. Through targeted forums, technical groups and market-focused initiatives, we help members anticipate regulatory developments, influence policy and standards, reduce risk, and position their businesses for long-term growth in the UK and beyond.

Our Sector Represents:

90,000

PEOPLE EMPLOYED IN THE UK

£14Billion

UK TURNOVER

£5Billion

EXPORTING WORLDWIDE

Welcome from Group Chairman



BEAMA's Electricity Networks Infrastructure group has long been the sole voice for our equipment manufacturing and services sector, but over the last five years our voice has become far more influential and listened to. UK Governments, Ofgem and the NESO now look to BEAMA ENI to help shape policy and regulatory changes that support our sector, the wider electricity system and the economy as a whole.

Through BEAMA the UK Government now fully recognises the critical role ENI members play in enabling the unprecedented growth of our electricity networks over the coming decades. The networks growth plan and its follow-on action programmes put ENI firmly at the heart of the sector's strategy to maximise the growth opportunities for our members."

Dai Richards
Chair of the BEAMA ENI Group

HITACHI

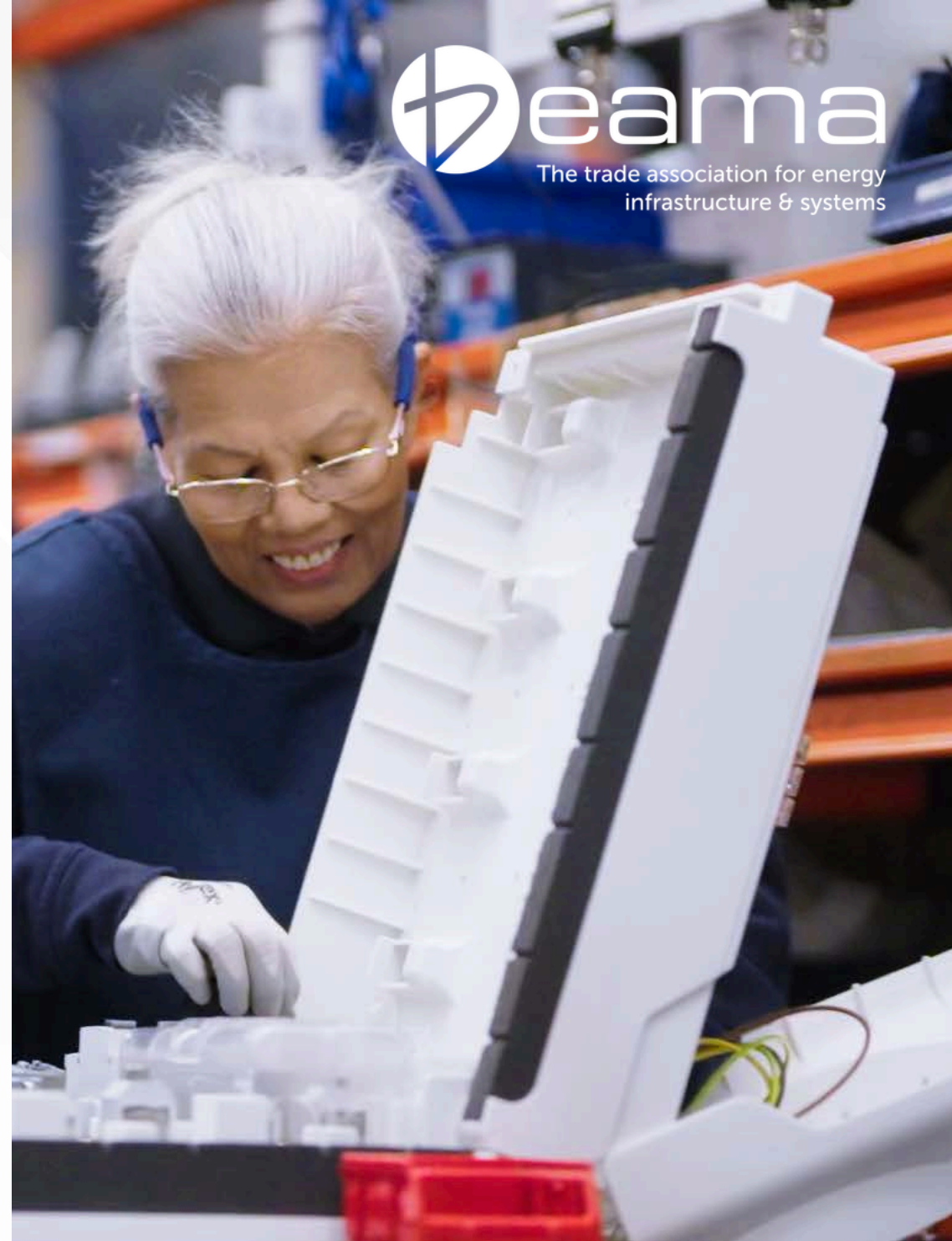
Our Sector

The BEAMA Electricity Networks Infrastructure (ENI) group is the voice of Britain's grid technology providers.

Members of BEAMA's ENI group are instrumental to manufacturing, innovating, and supplying smart systems for the efficient transmission and distribution of electricity. These technologies and services future-proof the grid and make clean electricity accessible to all.

BEAMA's access to Government and regulators, as well as representation on key groups and panels, give us the influence industry needs to succeed in this time of unprecedented growth. We sit on the **ministerially chaired Electricity Networks Delivery Forum**, allowing us to promote the critical role of the sector and what it needs to meet the needs of a growing network.

We are also **jointly leading the networks sector growth plan with the Energy Networks Association (ENA)**, working collaboratively with the UK's networks companies to improve the evidence base on the UK manufacturing sector and agree actions and recommendations to support us in maximising the economic opportunities from the growth in the networks sector.



Who is in scope?

Meet your network



Our scope covers manufacturers and suppliers of electrical network equipment, services and digital solutions, covering all voltage levels (from <math><1000\text{V}</math> to over 400kV) and supplying to both the regulated network companies and private markets. Member companies supply products and services including transformers, switchgear, protection and control, High-Voltage Direct Current (HVDC) and automation.

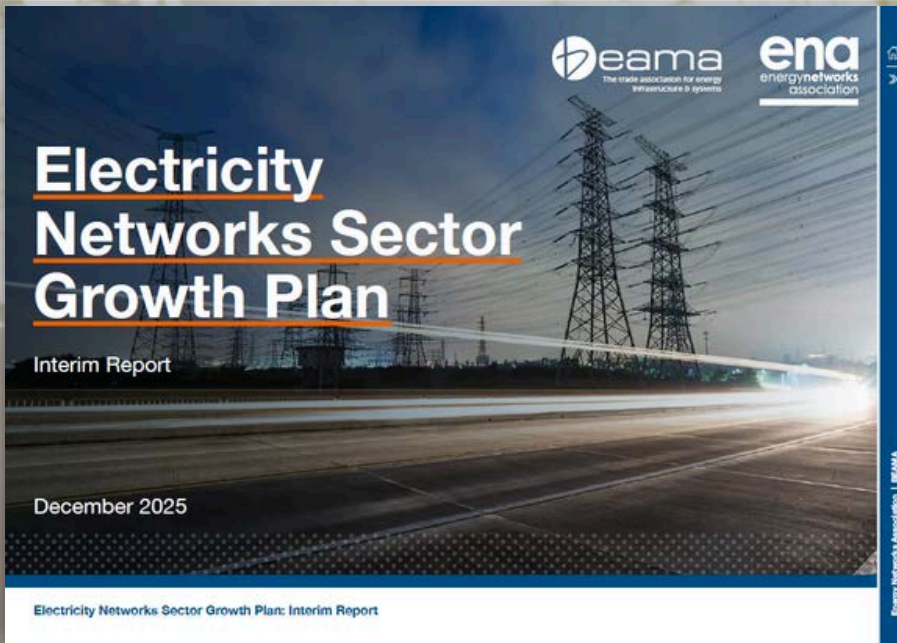


Who we work with...

... you work with.

We work closely with a range of government bodies and regulators to advocate for the needs of our members, including DESNZ, DBT, Ofgem, the National Wealth Fund and Great British Energy. We are also a member of T&D Europe, the European trade body for network manufacturers, and engage with a range of other trade bodies, including Energy UK and the Energy Networks Association.





Our Workplan

We work to ensure that government policy and regulation considers the needs of our supply chain, raising the need for greater visibility and confidence in demand for network products, as well as regulatory clarity on key issues like the phaseout of SF6. We promote the importance of sector-wide action on skills and the need for manufacturers to be able to access key skills.

Our focus is on both the regulated and independent networks businesses and in 2026 we are focused on jointly leading the electricity networks sector growth plan with the ENA, which aims to maximise the economic opportunity to the UK from the expansion of the electricity network. Our members are represented throughout the project, shaping the analysis that is taking place and the actions that are being agreed.

We feed into key work programmes like the industrial strategy and clean power 2030, as well as Ofgem's price control processes. Additionally, we support members to engage with product standards and embodied carbon, as well as European policy and regulation.

So, what needs to happen?
Both network operators and the supply chain are already growing, but we will need to be more ambitious to respond to changing need.
Collaboration, confidence and consensus are essential to giving the certainty required throughout the value chain. For that we need all stakeholders to play their part.
Network operators will need to use long term planning to rise to the challenge and transform their organisations to meet the needs of a rapidly expanding energy sector.
The supply chain will need to continue investing in new capacity and growing their skilled workforce to deliver a high change in production.
Ofgem will need to ensure that their regulatory frameworks can attract the levels of investment required and give certainty to network operators, as well as going further to support the supply chain to grow.
Government will need to set clear and consistent direction on energy policy and support Ofgem in delivering regulatory frameworks that meet the scale of the challenge.

What we're doing
Over the next six months, we will be conducting the deep sector-wide analysis that will inform the full Electricity Networks Sector Growth Plan to be published in summer 2026.
A comprehensive economic and supply chain analysis to quantify the economic opportunity stemming from network investment.
An action plan to support the growth of the UK supply chain and to strengthen domestic manufacturing capability.
A collaborative work programme to deliver evidence and skills requirements for the energy sector, covering transmission, distribution and the supply chain.
The work has already begun. We look forward to sharing the outcome of our work with you, that the ambition of our response meet this once in a century opportunity for the UK.

A national growth opportunity

- Electricity networks are essential to everyday life.**
Networks are part of the fabric of society, providing the foundation for almost all sectors of the economy.
- Demand for electricity is set to double by 2050.**
Increasing supply while delivering energy security, decarbonising power and meeting net zero targets will require investment in networks on a scale previously unseen.
- The UK has a huge opportunity to unlock national growth from network investment.**
Across every region, down every street, network investment will enable cleaner, cheaper, secure homegrown energy - while creating jobs, strengthening the domestic supply chain and manufacturing sector, and attracting investment to the UK.
- The benefits have the potential to reach well beyond this sector, with networks acting as an engine for growth.**
The sector will help ensure that businesses across Great Britain can access the clean, secure power they need to operate efficiently and expand. This investment will enable growth and competitiveness across multiple sectors.

50,000-130,000
Full-time equivalent (FTE) jobs by 2050.

£4-11bn
of Gross Value Added (GVA) in 2050

£70bn+
The Transmission Operators will deliver the largest increase in capital spending in the history of the privatised electricity transmission sector between 2020-31, potentially exceeding £70bn over the period.

£37-50bn
To meet rising demand between now and 2050, the distribution network is expected to need £37-50bn of additional investment, need a doubling of current annual levels, increase likely to be needed over the life

How do we work?

The Who, When, What behind your membership...

GROUP	ENI Executive Committee	Voice of ENI	ENI Technical Committee	Sector Growth Plan Working Groups
FREQ	Quarterly	Every 2 Months	Ad hoc	Every 4-6 Weeks
WHO	Senior Managers	Senior Managers and External Affairs Representatives	Technical Leads, Engineering Specialists, and Standards Experts	Range of Attendees
KEY THEMES AND OUTPUTS	Sets the annual workplan and priorities for the ENI group. Meetings also include expert updates from BEAMA staff and guest speakers from relevant policy and regulatory organisations.	Focuses on policy and advocacy, including topics such as consultation responses. Also acts as the main BEAMA forum for updates and input into the networks sector growth plan.	Advises and supports the development of coordinated technical responses, guidance and positions on standards development related to energy network infrastructure. Active participation ensures members remain at the forefront of standards, regulation and system-level technical developments.	Cross-sector working groups to support the analysis, supply chain/manufacturing and skills workstreams, working to agree commitments across the sector and act as a critical friend to the consultants delivering the commissioned outputs of the project.

Meet the Group Lead



The UK's electricity networks are facing unprecedented change, with up to 50GW of offshore wind and 22GW of battery storage on the system by 2030, and electricity demand doubling by 2050 to support electrification. BEAMA members are at the forefront of supporting this transition, ensuring we have the network products and services to meet the scale of this challenge.

To deliver this, our members want and need to grow – but this requires support. The electricity networks sector growth plan is an enormous opportunity to set out what manufacturers need and agree ways to make it happen.

We are advocating for the policy and regulatory changes that our members need, as well as improving the evidence base that is vital to understanding how the sector can grow. Our members also benefit from wider support for their businesses on issues like embodied carbon and product standards, as well as access to a wide range of BEAMA resources.”

Luke Sweeney
Head of Electricity Networks Infrastructure

[Get in Touch](#) 

The Wider Community

When you join a group within BEAMA, you benefit from being a part of the larger association, which represents a wide range of technologies and sub-sectors, including:



Transmission and distribution equipment for the electricity grid



Smart IOT devices for buildings



Heating, hot water and ventilation products



Electrical installation products for the built environment



Storage – thermal, phase-change and battery



Electric vehicle charging infrastructure



Smart metering and metering solutions

Our Sector Represents:

90,000

PEOPLE EMPLOYED IN THE UK

£14 Billion

UK TURNOVER

£5 Billion

EXPORTING WORLDWIDE

Why join the BEAMA community?

At BEAMA, we identify with the principle that a membership can provide a cost-effective way of staying in touch with activities that affect your business, whilst providing access to the sort of information and sphere of influence that is difficult to resource at Board level or through an individual appointment.

Becoming a BEAMA member instantly gives your company access to the BEAMA community. We run the organisation with a community approach at its heart; creating opportunities for networking with industry peers, opening up co-working opportunities, and sharing resources to help your company influence market defining policy, regulations or standards.



Being part of BEAMA means we're not facing common challenges alone. We're working together to shape a more resilient sector, ensuring our collective voice is heard and the industry continues to evolve with confidence."

Volution Group plc
Ventilation Group Member

Illustrating our
Areas of
Influence:



**Cross industry
collaboration to
tackle post Brexit
regulatory and trade
challenges**



**Creating a smart
systems approach
through technical
standardisation**



**Building markets
for building
controls and
automation**



**Reforming building
regulations to drive
low carbon building
technologies**



**Working with
Ministers to drive
grid investment**



**Market surveillance
assistance to
improve product
safety for consumers**

BEAMA Benefits

Readily Available Insight

Reducing the time and effort required to gather and interpret information, with trusted insight to support efficient internal briefings and training across a range of applicable topics.

Conformity and Compliance

Support to understand, interpret and apply relevant policies, regulations and standards with confidence.

Collaboration and Networking

Facilitated opportunities to share expertise, collaborate with peers and work collectively to address common challenges, assisted by BEAMA experts.

Policy and Standards Influence

Be a part of BEAMA's reputation and collective voice to shape the policies, regulations and standards which affect your products markets and future investment decisions.

Informed Navigation of Change

Visibility of policy and regulatory development for proactive planning and informed decisions with operational and commercial impact.

Wider Market Intelligence

Insight into evolving market expectations and information requests, including digitalisation, environmental performance and product safety.

Gain value from working alongside industry peers

Working with industry peers can be vital, particularly when facing challenges that cannot be tackled effectively alone. By joining, you gain collaboration where **strength in numbers** truly matter.

Consensus building for industry positions that may relate to technology performance assessment, skills development or customer advice.

Networking for projects including, but not exclusive to, guidance development, testing and/or certification scheme frameworks or trade communication campaigns.

Bringing aligned industries together for advocacy strength to ensure a common voice for UK and International policy, regulatory or standardisation development work.

Focused campaigns which can target a range of audiences to influence their perception of a given technology sector.

The capability to join non-Governmental collaborative environments in which members can support or track academic or 'think tank' research and development programmes.



Who you'll work with

Our community of Members



Who you'll work with

Our community of Members



What level of support can you expect from your BEAMA membership?



Specialised Support



Representation



Events and
Resources



Services

The support provided by BEAMA through its committees and vast resource libraries along with the services offered to all members, such as the 2050 Connected and Digitisation Hubs are extremely valuable to guide members through the ever-changing landscapes. This along with the BEAMA team lobbying Government has been pivotal in the changes that we are currently seeing in decarbonisation and safety."

Michael Smith Switchgear
Building Electricity Systems (BES) Member

Specialised Support

Account Management Support

Every BEAMA technology group has a dedicated 'account manager' offering expert support and advice along with the capability to manage industry projects such as the development of guidance documents.

Bespoke company-wide presentations

Through our expert account management service, members have the opportunity to request bespoke or general company briefings on relevant topics currently being overseen by the BEAMA team. These can include on technical, policy, sustainability, and digital topics.

Standards & Conformity Assessment Leadership

Influence the standards that shape your market. BEAMA represents members across UK, European and international standards and conformity assessment bodies, ensuring your interests are heard, requirements are understood, and emerging technologies are reflected in future regulation and standards.

Guiding your organisation through new regulations or technical standards

Our experts at BEAMA will help guide you through changes in the marketplace that impact your business, whether that's amendments to existing technical standards and regulations, or new reporting requirements. We aim to steer you through how to apply these changes, giving you early notice ahead of publication.



BEAMA combines technical knowledge with policy engagement to support members operating in complex and rapidly developing markets. In areas such as smart buildings and electrification, that blend of expertise helps businesses engage more confidently in regulatory discussions and align with the wider direction of travel.”

myenergi

Smart Buildings Group (SBG) Member



Representing Members



Facilitating networking and collaboration across sector groups



Engaging with our community about UK & International policy activity



Positioning and sector marketing support



Actively engaging in National, European and International standardisation and conformity assessment



Engaging with other supply chain organisations



Member projects, thought leadership, campaigns and lobbying



Guiding our community of members through periods of industry transformation on topics of Digitalisation and Net Zero

Events and Resources

Networking events

Our account management and marketing teams host networking events driven by membership needs, online and in-person. These events could be issues focused or provide a platform for speaking to, and networking with, members of market value chains.

Bespoke and up-to-date guidance and publications

We create high-impact guidance driven by member demand, the policy landscape and future market needs. By convening our members and partnering where beneficial with cross-industry stakeholders, we deliver credible publications that support commercial decision-making, strengthen member markets, and shape policy outcomes.



Our Services

We offer a wide range of essential services to future-proof your business:



BEAMA 2050 Connected



Digitalisation Hub



Policy & External Affairs



Statistics & Economics

Uniting for Net Zero and Circularity

As part of membership, companies benefit from BEAMA 2050 Connected, our cross-sector platform for collaboration on Net Zero and the circular economy.

Decarbonising the value chain requires coordinated action, and 2050 Connected brings members and their supply chain together to share and collaboratively develop best practice guidance, strengthen communication and drive consistent, practical progress.

Whether a company is just starting down their sustainability journey or has a well embedded sustainability team, BEAMA 2050 Connected empowers those delivering change by helping value chains to align activity, accelerate learning and increase collective impact.

“BEAMA 2050 Connected brings industry together to learn and agree a shared path to sustainability.”

Amy Collins
Head of Net Zero
and Clean Tech



eama
2050 Connected

Shoulder to shoulder
for Net Zero alignment



Forming an Engaged Community

Community Events and Learning:

Gain exclusive access to events that connect companies across the value chain, creating opportunities for collaboration, insight sharing, and mutual learning.



Supporting Informed Understanding

BEAMA 2050 Connected Hub Access:

Benefit from access to the BEAMA 2050 Connected Hub, our central platform supporting sustainability efforts across the sector, shared learning and policy and regulatory insight.



Collaborating for Consistency

Focused Groups and Communities:

Engage in BEAMA's Technical Sustainability Committee and working groups, where members collaborate to shape industry positions and develop guidance, standards and best practice that support the wider membership.

Digitalisation Hub

Digitalisation presents both challenges and opportunities for the electrotechnical sector. New UK, EU and international regulations, standards and technologies are emerging to maximise benefits while protecting consumers, markets and critical infrastructure.

The Digitalisation Hub exists to empower members to shape the digital future of the electrotechnical sector - practical support, peer collaboration and tools to test, prove, and scale digital solutions.

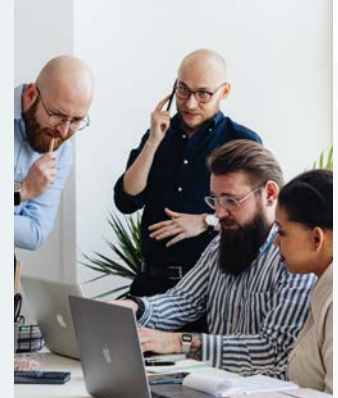


“Our Digital Hub and Network exist to make digital transformation practical - turning standards, regulation and real-world implementation into an enabler, not a barrier, so members can move forward with confidence.”

Patricia Massey
Head of Digital &
Technical Standards

Digital Strategy & Innovation Network (DSIN)

DSIN is BEAMA's member forum for digital transformation. It's a collaborative space where members identify shared challenges, shape coordinated industry positions and turn digital ambition into collective, practical action that protects and advances member interests.



Digital Hub

The Hub offers practical tools and expert support - guidance on data standards, cybersecurity and data protection, AI, connected systems and Digital Product Passports, plus regular regulatory and standards updates. Members actively shape and contribute to guidance documents, workshops, case studies, newsletters and sandbox activities - testing and refining ideas before wider rollout. Backed by BEAMA's dedicated digital resource, the Hub empowers members to boost efficiency, strengthen compliance, manage risk and unlock the full potential of digitalisation together.



Policy & External Affairs

Policy and regulation play a decisive role in shaping demand, costs and investment for BEAMA members. As a respected and established voice, BEAMA is trusted by government, regulators and Industry partners to provide expert insight on the technologies and markets we represent.

BEAMA is well known and well regarded across Whitehall, regulators and European institutions. Through longstanding relationships with Ministers, officials and key stakeholders, we ensure our members' voices are heard in the development of UK and EU policy and regulation.

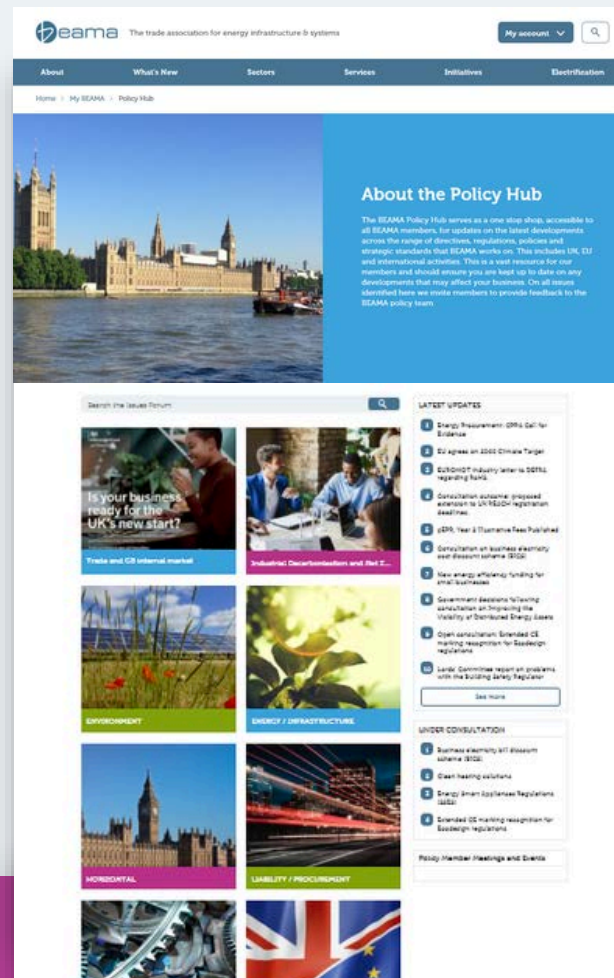
We support members by providing early notice of policy changes and advising on impacts in a variety of formats. We translate our members' commercial priorities into clear policy positions, underpinned by robust evidence, market insight and technical expertise to maximise our influence. Our partnerships, including with the Energy Systems Catapult, strengthen our ability to shape future market frameworks, support innovation and open pathways to international opportunity.

“We alert you to the opportunities and costs of policies, and promote your views to benefit our industry.”

Simon Harpin
Head of Policy

The Policy Hub and briefings

Every BEAMA member company gains their team's unrestricted access to our password protected web-based chronological library of policy and regulatory information. This enables members to receive the latest updates, recap long-running topics and track progress over time. We also provide a detailed tracker and monthly policy webinars.



Web-based resources are accessible to your entire organisation

Arrange direct training or discussions on the policy topics which matter most to your company

Meet officials and Ministers, and get preparation support before your own discussions with policy makers

Statistics & Economics

Our Statistics & Economics function provides trusted, independent market insight to support confident decision-making and strategic planning from data across the electrical and mechanical engineering industries.

Fed by our Business Dashboard, our Market Pulse Reports draw together information from multiple sources to provide a quarterly snapshot of market conditions. These reports are valued by members as a clear reflection of market performance and trends, and by policymakers as a robust evidence base for understanding the health of the sector.

This insight saves members significant time by bringing together reliable, industry-specific data in one place, while ensuring businesses remain informed of wider economic context. Combined with short- and long-term analysis, BEAMA's statistics underpin investment decisions, support business planning and strengthen confidence in future market outlooks.



“BEAMA’s statistics and market insight provide members with a trusted evidence base to understand market trends, inform strategic decisions and navigate an evolving economic landscape with confidence.”

Emmanuel Amoakohene
Head of Statistics

BEAMA Indices Portal

An exclusive portal for our Contract Price Adjustment (CPA) service using independently sourced material, labour and transport cost data to support accurate price adjustments and escalations.

Business Dashboard

BEAMA's digital repository that aggregates industry trends, manufacturing data, and national economic indicators to help you track market performance and inform strategic planning.



Statistics Publications

Regular market insight reports across BEAMA product groups, tracking sales volumes and values, short- and long-term trends, forecasts and market surveillance.

Market Pulse

Quarterly reports combining member survey data and wider industry sources to highlight key trends and indicators for growth, presented in a clear, digestible format alongside analysis of drivers and impacts.



Additional Services

Further support available to all BEAMA Members:

BEAMA Legal

BEAMA Legal provides expert legal, regulatory and trade policy support to manufacturers across BEAMA's sectors, helping members operate compliantly, competitively, and with confidence.

Legal guidance on contract law and conditions, competition, product liability, procurement, and other commercial and regulatory legal issues.

Contract publications, including BEAMA's own contract conditions and European legal publications to which BEAMA legal contributes via Orgalim.

Legislative monitoring and advocacy at UK and EU level, representing members' interests.

Trade policy representation in the UK and EU covering rules of origin, tariffs, customs procedures and regulatory requirements, with direct engagement with UK government.

International Trade & Exhibition Support

Our International Trade and Exhibition Support helps members access global markets faster, cheaper, and with reduced complexity.

Practical exhibition support

Trusted advice on freight forwarding, logistics, and exhibition stand design, so you turn presence into results.

Market insight & visibility

We promote UK products and new technologies overseas and share intelligence on markets with the strongest growth potential.

Everything in one place

Live opportunities, invitations, and key trade contacts hosted in the BEAMA Members Area.

Who can we help?



New or first-time exporters



SMEs entering overseas markets



Established exporters targeting new regions

Our Vision



A market for safe, secure, and compliant products.



A strong investment environment for electrification technologies.



A prosperous export market for our members.



A low carbon, smart and flexible energy system.

Our Mission

To be the first port of call for industry, media and Government regarding the pathway to electrification for a Net Zero future.

To provide leadership, expertise and independent influence in the areas of Net Zero product safety, performance, energy efficiency and sustainability.

To support member companies in understanding how legislation, regulation and standardisation will affect their day to day business so they can invest and act appropriately.

To lead the development of a market for sustainable products and uphold the integrity of our industry, supporting our community of members to achieve their Net Zero corporate responsibilities and goals.

To serve the needs of the industry as the leading trade association by proactively developing and influencing the content of technical standards and regulation.

To drive and influence National, European and International standards on safety and performance and influence conformity assessment and accreditation policy.



“We consider maintaining a BEAMA membership one of the most efficient and impactful investments we’ve made. The insight, representation, and practical support they provide deliver real value, helping us navigate change and focus our resources where they matter most.”

Ormazabal UK
Electricity Networks Infrastructure (ENI) Member

Ready to Compete, Comply, and Grow?

Join Us

✉ info@beama.org.uk

🌐 www.beama.org.uk

🌐 @BEAMA

📍 Rotherwick House 3 Thomas
More Street London E1W 1YZ

